

Leni-Basso "Ghostly Round" CHANNEL HOOK-UP

| NO. | PURPOSE | FOCUS | COLOR | INSTRUMENT | QUANTITY | LOCATION | UNIT | DMX | NO. | PURPOSE | FOCUS | COLOR | INSTRUMENT | QUANTITY | LOCATION | UNIT | DMX | NO. | PURPOSE | FOCUS | COLOR | INSTRUMENT | QUANTITY | LOCATION | UNIT | DMX | NO. | PURPOSE | FOCUS | COLOR | INSTRUMENT | QUANTITY | LOCATION | UNIT | DMX | | | |
|-----|--------------|------------------|---------|----------------|----------|----------|------|-----|-----|-------------------|-------------------|----------------|----------------|-----------------|-----------------|------|-----|-----|------------------|----------------|----------------|-----------------|-----------------|----------------|------|-----|-----------|----------------|-------------------|------------------------|------------------------|-----------------|----------------|------|-----|--|--|--|
| 1 | FRONT | Downstage Right | LEE.201 | CONVEX 1kw | 1 | LX-1 | | | 36 | 7 | | LEE.201 | PAR64 CP62 1kw | 1 | LX-6 | | | 71 | 6-Midstage Left | LEE.201 | SourceFour 26' | 1 | Midstage Left | | | 106 | | | | | | | | | | | | |
| 2 | | Downstage Center | LEE.201 | CONVEX 1kw | 1 | LX-1 | | | 37 | 8 | | LEE.201 | PAR64 CP62 1kw | 1 | LX-3 | | | 72 | 7-Midstage Right | LEE.201 | SourceFour 26' | 1 | Midstage Right | | | 107 | BACK SLIT | 2 | LEE.161 | SourceFour 26' | 1 | LX-8 | | | | | | |
| 3 | | Downstage Left | LEE.201 | CONVEX 1kw | 1 | LX-1 | | | 38 | WASH-PAR Center | | LEE.201 | PAR64 CP61 1kw | 1 | LX-5 | | | 73 | 8-Midstage Left | LEE.201 | SourceFour 26' | 1 | Midstage Left | | | 108 | | 3 | LEE.161 | SourceFour 26' | 1 | LX-10 | | | | | | |
| 4 | | | | | | | | | 39 | 2 | | LEE.201 | PAR64 CP61 1kw | 1 | LX-8 | | | 74 | 9-UPstage Right | LEE.201 | SourceFour 26' | 1 | UPstage Right | | | 109 | | 4 | LEE.161 | SourceFour 26' | 1 | LX-10 | | | | | | |
| 5 | | | | | | | | | 40 | 3 | | LEE.201 | PAR64 CP61 1kw | 1 | LX-8 | | | 75 | 10-Upstage Left | LEE.201 | SourceFour 26' | 1 | Upstage Left | | | 110 | | 5 | LEE.161 | SourceFour 26' | 1 | LX-8 | | | | | | |
| 6 | | | | | | | | | 41 | 4 | | LEE.201 | PAR64 CP61 1kw | 1 | LX-5 | | | 76 | TOP outside | LEE.161 | SourceFour 26' | 1 | LX-4 | | | 111 | | | | | | | | | | | | |
| 7 | WASH-outside | Right | LEE.201 | FRESNELS 2kw | 1 | LX-10 | | | 42 | | | | | | | | | 77 | 2 | LEE.161 | SourceFour 26' | 1 | LX-7 | | | 112 | | 7 | LEE.161 | SourceFour 26' | 1 | LX-10 | | | | | | |
| 8 | | Center | LEE.201 | FRESNELS 2kw | 1 | LX-10 | | | 43 | | | | | | | | | 78 | 3 | LEE.161 | SourceFour 26' | 1 | LX-9 | | | 113 | | | | | | | | | | | | |
| 9 | | Left | LEE.201 | FRESNELS 2kw | 1 | LX-10 | | | 44 | | | | | | | | | 79 | 4 | LEE.161 | SourceFour 26' | 1 | LX-9 | | | 114 | | | | | | | | | | | | |
| 10 | | | | | | | | | 45 | | | | | | | | | 80 | 5 | LEE.161 | SourceFour 26' | 1 | LX-7 | | | 115 | HMI Lamp | Right | NC | DMX 1.2kw HMI | 1 | LX-9 | | | | | | |
| 11 | | | | | | | | | 46 | | | | | | | | | 81 | 6 | LEE.161 | SourceFour 26' | 1 | LX-4 | | | 116 | | Center | NC | DMX 1.2kw HMI | 1 | LX-9 | | | | | | |
| 12 | | | | | | | | | 47 | | | | | | | | | 82 | 7 | LEE.161 | SourceFour 26' | 1 | LX-9 | | | 117 | | Left | NC | DMX 1.2kw HMI | 1 | LX-9 | | | | | | |
| 13 | WASH-inside | Front Right | LEE.201 | FRESNELS 2kw | 1 | LX-4 | | | 48 | MIDDLE SIDE | 3-Downstage Right | LEE.201 | SourceFour 26' | 1 | Downstage Right | | | 83 | TOP with iris | A | LEE.161 | SourceFour 26' | 1 | LX-7 | | | 118 | HMI Dimmer | Right | DMX Blind Shutter | 1 | LX-9 | | | | | | |
| 14 | | | | | | | | | 49 | 4-Downstage Left | LEE.201 | SourceFour 26' | 1 | Downstage Left | | | | 84 | B | LEE.161 | SourceFour 26' | 1 | LX-6 | | | 119 | | Center | DMX Blind Shutter | 1 | LX-9 | | | | | | | |
| 15 | | Front Left | LEE.201 | FRESNELS 2kw | 1 | LX-4 | | | 50 | 5-Midstage Right | LEE.201 | SourceFour 26' | 1 | Midstage Right | | | | 85 | C | LEE.161 | SourceFour 26' | 1 | LX-6 | | | 120 | | Left | DMX Blind Shutter | 1 | LX-9 | | | | | | | |
| 16 | TOP BASE | 1-Center large | LEE.201 | FRESNELS 1kw | 1 | LX-6 | | | 51 | 6-Midstage Left | LEE.201 | SourceFour 26' | 1 | Midstage Left | | | | 86 | D | LEE.161 | SourceFour 26' | 1 | LX-7 | | | | | | | | | | | | | | | |
| 17 | | 2-Center small | LEE.201 | FRESNELS 1kw | 1 | LX-6 | | | 52 | 7-UPstage Right | LEE.201 | SourceFour 26' | 1 | Midstage Right | | | | 87 | E | LEE.161 | SourceFour 26' | 1 | LX-3 | | | | | | | | | | | | | | | |
| 18 | | 3-around | LEE.201 | FRESNELS 1kw | 1 | LX-7 | | | 53 | 8-UPstage Right | LEE.201 | SourceFour 26' | 1 | Midstage Left | | | | 88 | F | LEE.161 | SourceFour 26' | 1 | LX-3 | | | | | AF-1000 | 1 | NC | AF-1000 | 1 | Midstage Right | | | | | |
| 19 | | 4-around | LEE.201 | FRESNELS 1kw | 1 | LX-4 | | | 54 | | | | | | | | | 89 | G | LEE.161 | SourceFour 26' | 1 | LX-3 | | | | | 2 | NC | AF-1000 | 1 | Downstage Right | | | | | | |
| 20 | | 5-around | LEE.201 | FRESNELS 1kw | 1 | LX-3 | | | 55 | | | | | | | | | 90 | H | LEE.161 | SourceFour 26' | 1 | LX-5 | | | | | 3 | NC | AF-1000 | 1 | Downstage Right | | | | | | |
| 21 | | 6-around | LEE.201 | FRESNELS 1kw | 1 | LX-3 | | | 56 | | | | | | | | | 91 | I | LEE.161 | SourceFour 26' | 1 | LX-4 | | | | | 4 | NC | AF-1000 | 1 | Downstage Left | | | | | | |
| 22 | | 7-around | LEE.201 | FRESNELS 1kw | 1 | LX-4 | | | 57 | | | | | | | | | 92 | TOP with iris | J | LEE.201 | SourceFour 26' | 1 | LX-5 | | | | | 5 | NC | AF-1000 | 1 | Downstage Left | | | | | |
| 23 | | 8-around | LEE.201 | FRESNELS 1kw | 1 | LX-7 | | | 58 | LOWER SIDE | 3-Downstage Right | LEE.201 | SourceFour 26' | 1 | Downstage Right | | | 93 | | | | | | | | | | 6 | NC | AF-1000 | 1 | Midstage Left | | | | | | |
| 24 | WASH-SCREEN | 1 | LEE.201 | PAR64 CP62 1kw | 1 | LX-5 | | | 59 | 4-Downstage Left | LEE.201 | SourceFour 26' | 1 | Downstage Left | | | | 94 | SCREEN PAR | 1 | LEE.201 | PAR64 CP62 1kw | 1 | Midstage Right | | | | Source4 Strobe | A | NC | SourceFour 36 lampless | 1 | LX-4 | | | | | |
| 25 | | 2 | LEE.201 | PAR64 CP62 1kw | 1 | LX-8 | | | 60 | 5-Midstage Right | LEE.201 | SourceFour 26' | 1 | Midstage Right | | | | 95 | 2 | LEE.201 | PAR64 CP62 1kw | 1 | Downstage Right | | | | | B | NC | SourceFour 36 lampless | 1 | LX-4 | | | | | | |
| 26 | | 3 | LEE.201 | PAR64 CP62 1kw | 1 | LX-10 | | | 61 | 6-Midstage Left | LEE.201 | SourceFour 26' | 1 | Midstage Left | | | | 96 | 3 | LEE.201 | PAR64 CP62 1kw | 1 | Downstage Right | | | | | C | NC | SourceFour 36 lampless | 1 | LX-7 | | | | | | |
| 27 | | 4 | LEE.201 | PAR64 CP62 1kw | 1 | LX-10 | | | 62 | 7-Midstage Right | LEE.201 | SourceFour 26' | 1 | Midstage Right | | | | 97 | 4 | LEE.201 | PAR64 CP62 1kw | 1 | Downstage Left | | | | | D | NC | SourceFour 36 lampless | 1 | LX-7 | | | | | | |
| 28 | | 5 | LEE.201 | PAR64 CP62 1kw | 1 | LX-8 | | | 63 | 8-Midstage Left | LEE.201 | SourceFour 26' | 1 | Midstage Left | | | | 98 | 5 | LEE.201 | PAR64 CP62 1kw | 1 | Downstage Left | | | | | E | NC | SourceFour 36 lampless | 1 | LX-7 | | | | | | |
| 29 | | 6 | LEE.201 | PAR64 CP62 1kw | 1 | LX-5 | | | 64 | 9-UPstage Right | LEE.201 | SourceFour 26' | 1 | UPstage Right | | | | 99 | 6 | LEE.201 | PAR64 CP62 1kw | 1 | Midstage Left | | | | | F | NC | SourceFour 36 lampless | 1 | LX-4 | | | | | | |
| 30 | WASH-PAR | 1 | LEE.201 | PAR64 CP62 1kw | 1 | LX-2 | | | 65 | 10-Upstage Left | LEE.201 | SourceFour 26' | 1 | Upstage Left | | | | 100 | SCREEN SLIT | 1 | LEE.201 | SourceFour 50' | 1 | Midstage Right | | | | | G | NC | SourceFour 36 lampless | 1 | LX-5 | | | | | |
| 31 | | 2 | LEE.201 | PAR64 CP62 1kw | 1 | LX-3 | | | 66 | SLIT SIDE | 1-Front Right | LEE.201 | SourceFour 26' | 1 | Front Right | | | 101 | 2 | LEE.201 | SourceFour 50' | 1 | Downstage Right | | | | | | PROJECTOR Shutter | | PJ DMX Shutter | 1 | LX-2 | | | | | |
| 32 | | 3 | LEE.201 | PAR64 CP62 1kw | 1 | LX-5 | | | 67 | 2-Front Left | LEE.201 | SourceFour 26' | 1 | Front Left | | | 102 | 3 | LEE.201 | SourceFour 50' | 1 | Downstage Right | | | | | | I-CUE | | I-CUE | 1 | LX-2 | | | | | | |
| 33 | | 4 | LEE.201 | PAR64 CP62 1kw | 1 | LX-5 | | | 68 | 3-Downstage Right | LEE.201 | SourceFour 26' | 1 | Downstage Right | | | 103 | 4 | LEE.201 | SourceFour 50' | 1 | Downstage Left | | | | | | | | | | | | | | | | |
| 34 | | 5 | LEE.201 | PAR64 CP62 1kw | 1 | LX-9 | | | 69 | 4-Downstage Left | LEE.201 | SourceFour 26' | 1 | Downstage Left | | | 104 | 5 | LEE.201 | SourceFour 50' | 1 | Downstage Left | | | | | | | | | | | | | | | | |
| 35 | | 6 | LEE.201 | PAR64 CP62 1kw | 1 | LX-8 | | | 70 | 5-Midstage Right | LEE.201 | SourceFour 26' | 1 | Midstage Right | | | 105 | 6 | LEE.201 | SourceFour 50' | 1 | Midstage Left | | | | | | | | | | | | | | | | |

OH PLOT

FLOOR PLOT

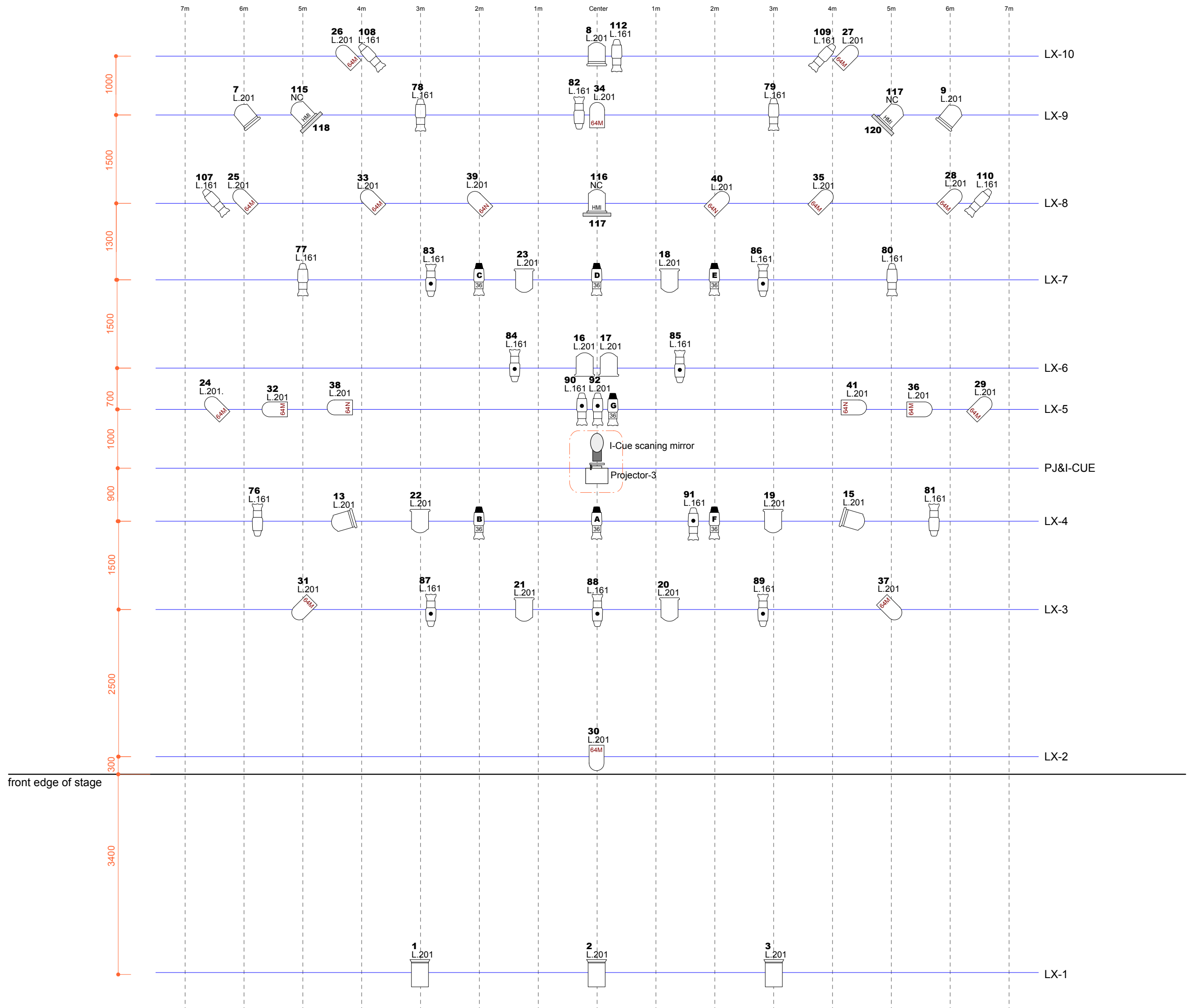
Leni-Basso "Ghostly Round" INSTRUMENT LIST for Netherlands Amsterdam / Bellevue

| | Total amount | Theater or Venue |
|------------------------|--------------|------------------|
| SourceFour 26' | 46 | / |
| SourceFour 36 lampless | 7 | / |
| SourceFour 50' | 6 | / |
| | | / |
| FRESNELS 2kw | 5 | / |
| FRESNELS 1kw | 8 | / |
| CONVEX 1kw | 3 | / |
| | | / |

| | Total amount | Theater or Venue |
|----------------|--------------|------------------|
| PAR64 CP62 1kw | 20 | / |
| PAR64 CP61 1kw | 4 | / |
| | | / |
| | | / |
| | | / |
| | | / |
| | | / |
| | | / |

| | Total amount | Theater or Venue |
|------------------------|--------------|------------------|
| DMX 1.2kw HMI | 3 | / |
| DMX Blind Shutter | 3 | / |
| AF-1000 | 6 | / |
| | | / |
| Iris for Source Four | 10 | / |
| Holder for Source Four | 7 | / |
| | | / |
| | | / |
| SPARK-4D | 1 | / |

| | Total amount | Leni-Basso |
|----------------------|--------------|------------|
| PJ DMX Shutter | 1 | / |
| I-CUE | 1 | / |
| Source4 Strobe lamp | 7 | / |
| | | / |
| Gobos for Source Fou | 7 | / |
| | | / |
| | | / |
| | | / |




balance, inc. DESIGN
 e-MAIL design@balance.co.jp
 TEL +81 3 57 98 35 46 FAX +81 3 57 98 35 47
 4-12-14.EBISU.SHIBUYA
 TOKYO.150-0012.JAPAN

DESIGNED by: YUUJI SEKIGUCHI
 C-Phone +81-90-3216-8064
 e-MAIL yuuji@balance.co.jp

OPERATED by:

KEY:

Venue

- 2000w Fresnel ...5
- 1000w Fresnel...8
- 1000w PC...3
- 1000w PAR64-CP62(M)...20
- 1000w PAR64-CP61(N)...4
- 575w SourceFour 26...46
- 575w SourceFour 36...7
- 575w SourceFour 50...6
- SourceFour IRIS...10
- 1000w AF-1000...6
- 1250w DMX HMI...3 with DMX-shutter & barndoor
- Low Base
- High Boom

Bring

- ROSCO I-CUE...1 / 1
- DMX-shutter for Projector...1 / 2
- 200-240v 4A S4 Strobe...7 / 8

REMARKS:

- Channel No.
- Gel No.
- Spot Type

Leni-Basso Akiko Kitamura
 ghostly round

DATE:

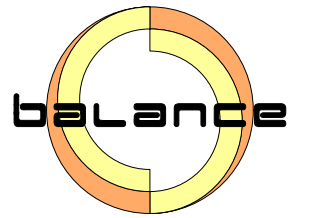
PLACE:

TOUR:

PLOT:
BRIDGE/CATSWALK

DATE: 07.02.2005 REV,UP: 10.05.2006

SCALE: 1 / 60 - A3 NO. 1 OF 3



balance, inc. DESIGN
 e-MAIL design@balance.co.jp
 TEL +81 3 57 98 35 46 FAX +81 3 57 98 35 47
 4-12-14,EBISU,SHIBUYA
 TOKYO.150-0012.JAPAN

DESIGNED by: YUJI SEKIGUCHI
 C-Phone +81-90-3216-8064
 e-MAIL yuji@balance.co.jp

OPERATED by:

KEY:

- Venue**
- 2000w Fresnel ...5
 - 1000w Fresnel...8
 - 1000w PC...3
 - 1000w PAR64-CP62(M)...20
 - 1000w PAR64-CP61(N)...4
 - 575w SourceFour 26...46
 - 575w SourceFour 36...7
 - 575w SourceFour 50...6
 - SourceFour IRIS...10
 - 1000w AF-1000...6
 - 1250w DMX HMI...3
with DMX-shutter & bamdoor
 - Low Base
 - High Boom

Bring

- ROSCO I-CUE...1 / 1
- DMX-shutter for Projector...1 / 2
- 200-240v 4A S4 Strobe...7 / 8

REMARKS:

- 129 ← Channel No.
- L.203 ← Gel No.
- ← Spot Type

Leni-Basso Akiko Kitamura
ghostly round

DATE:

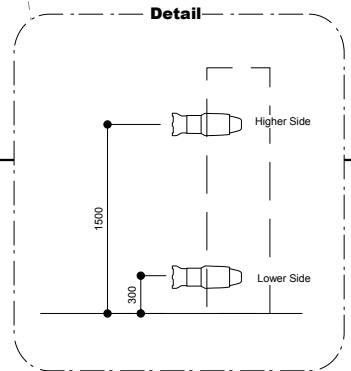
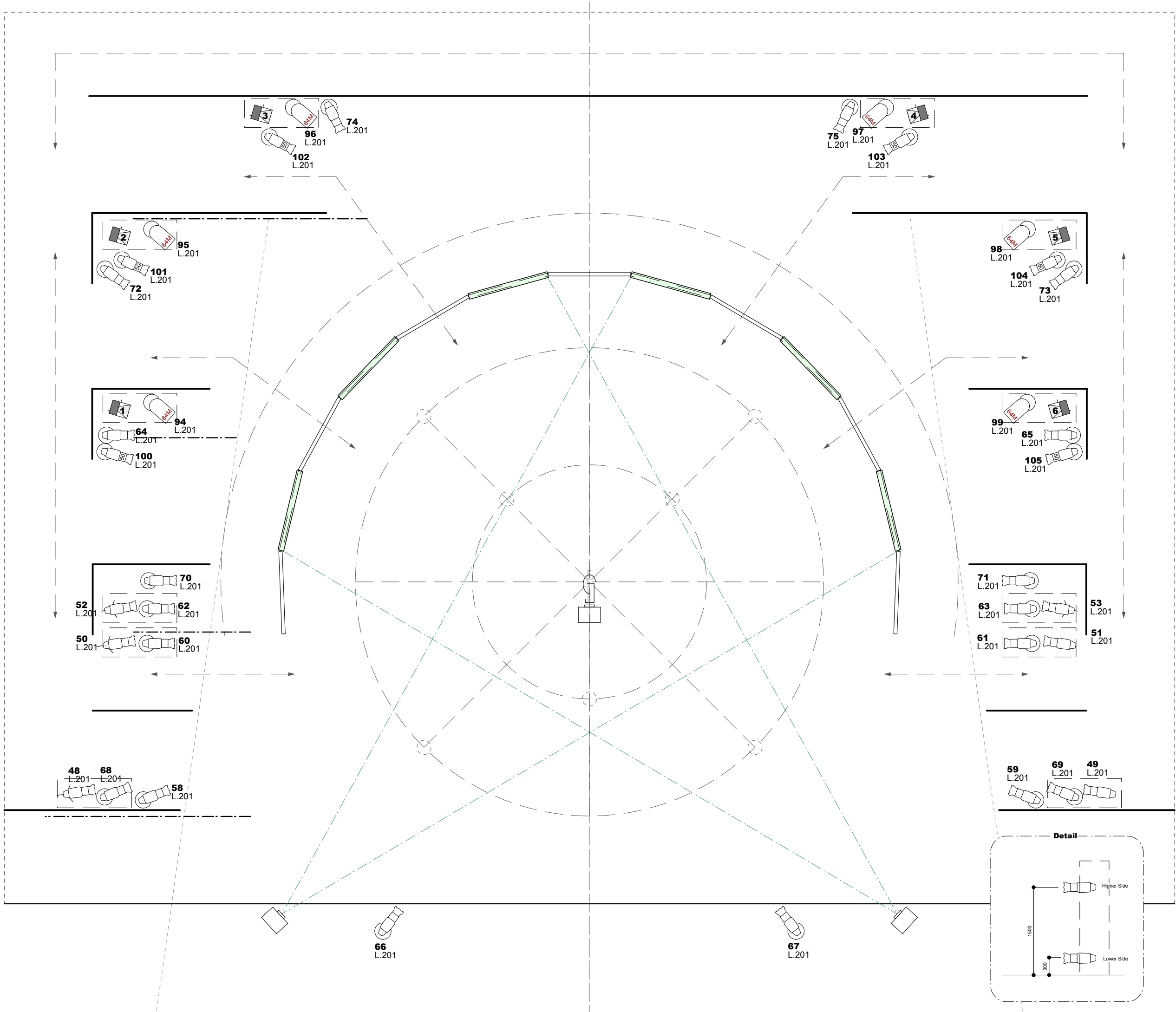
PLACE:

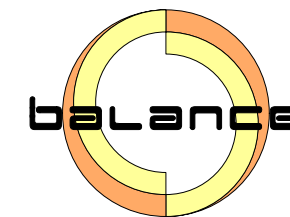
TOUR:

PLOT: **FLOOR**

DATE: 07.02.2005 REV,UP: 10.05.2006

SCALE: 1 / 60 - A3 NO. 2 OF 3





balance, inc. DESIGN
 e-MAIL design@balance.co.jp
 TEL +81 3 57 98 35 46 FAX +81 3 57 98 35 47
 4-12-14,EBISU,SHIBUYA
 TOKYO.150-0012.JAPAN

DESIGNED by: YUUJI SEKIGUCHI
 C-Phone +81-90-3216-8064
 e-MAIL yuuji@balance.co.jp

OPERATED by:

KEY:
Venue

- 2000w Fresnel ...5
- 1000w Fresnel...8
- 1000w PC...3
- 1000w PAR64-CP62(M)...20
- 1000w PAR64-CP61(N)...4
- 575w SourceFour 26...46
- 575w SourceFour 36...7
- 575w SourceFour 50...6
- SourceFour IRIS...10
- 1000w AF-1000...6
- 1250w DMX HMI...3
with DMX-shutter & bamdoor
- Low Base
- High Boom

Bring

- ROSCO I-CUE...1 / 1
- DMX-shutter for Projector...1 / 2
- 200-240v 4A S4 Strobe...7 / 8

REMARKS:

- 129** ← Channel No.
- L.203 ← Gel No.
- ← Spot Type

Leni-Basso Akiko Kitamura
 ghostly round

DATE:

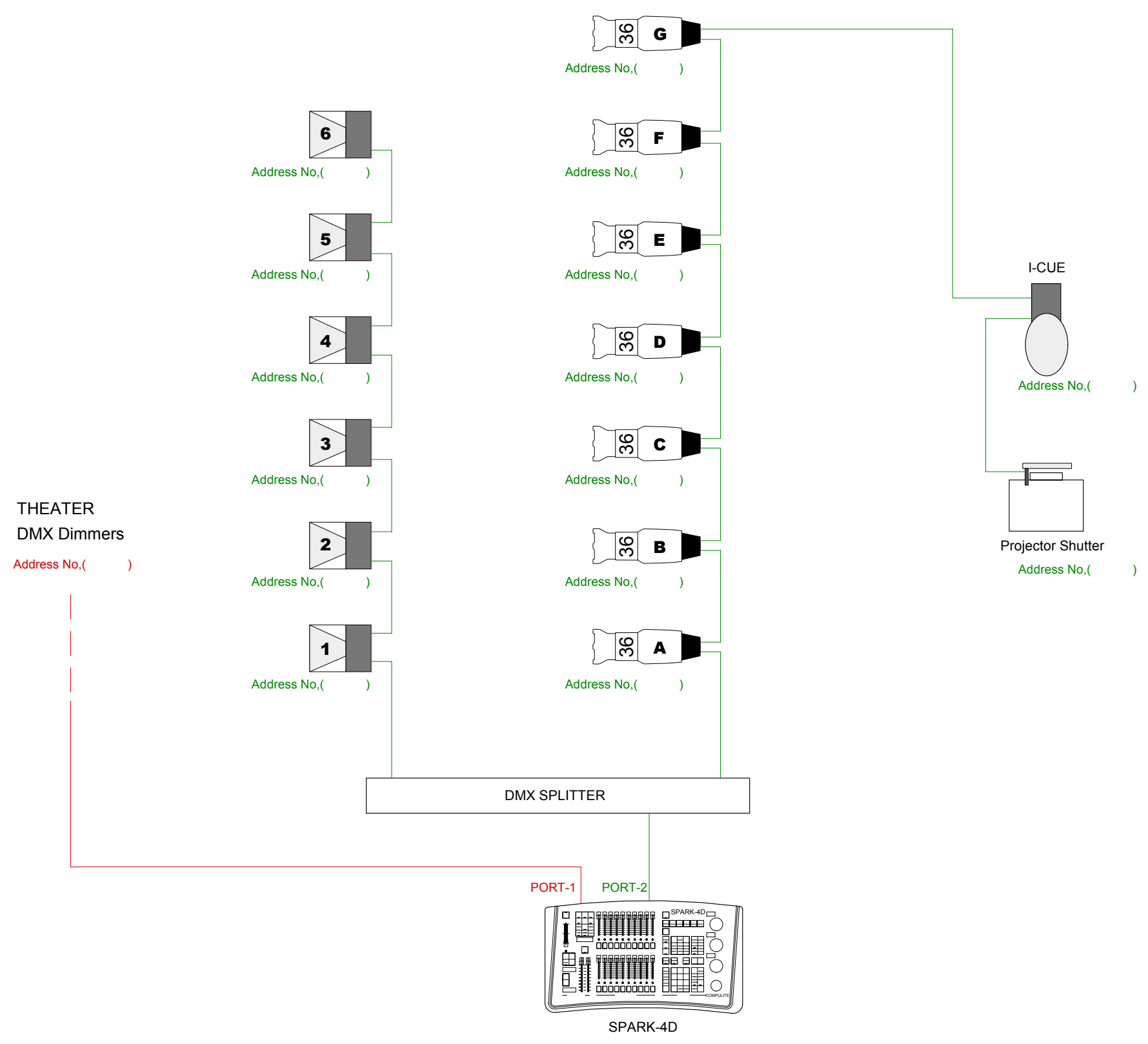
PLACE:

TOUR:

PLOT: **WIRE DMX**

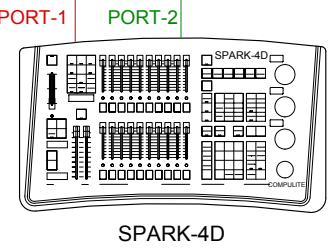
DATE: 07.02.2005 **REV,UP:** 10.05.2006

SCALE: 1 / 60 - A3 **NO.** 3 OF 3



THEATER
 DMX Dimmers
 Address No,()

DMX SPLITTER



- G**
Address No,()
- F**
Address No,()
- E**
Address No,()
- D**
Address No,()
- C**
Address No,()
- B**
Address No,()
- A**
Address No,()

- I-CUE
Address No,()
- Projector Shutter
Address No,()